

J Series Air Distribution Manifolds are designed and configured in any layout to fit the application as per client's requirements.



Factory Test

- 100% pressure tested
- PT test standard
- RT test an option

Cleaning

- Stainless steel passivated.
- Carbon steel cleaned & galvanized.

Features and Ordering Information

To order J Series, prefix "J" and build up an ordering number by combining the designators in the sequence below.

1. Manifold Pipe Size

Pipe Size	Designator
1"	1
2"	2
3"	3
4"	4

2. Pipe Schedule

Pipe SCH	Designator
SCH40	4
SCH80, XS	8
SCH160	16
XXS	X

3. Pipe Material

Pipe	Standard	Identifier
Black & Hot Dipped Galvanized Steel Pipe	ASTM A53 Type F Grade A -Welded	CFA
	ASTM A53 Type E Grade A - Welded	CEA
	ASTM A53 Type E Grade B - Welded	CEB
	ASTM A53 Type S Grade A - Seamless	CSA
	ASTM A53 Type S Grade B - Seamless	CSB
Seamless Carbon Steel Pipe	ASTM A106 Grade A	CA
	ASTM A106 Grade B	CB
	ASTM A106 Grade C	CC
Seamless Stainless Steel Pipe	ASTM A312 TP316	S
	ASTM A312 TP316L	L
	ASTM A312 TP304	4
	ASTM A312 TP304L	4L
	ASTM A312 UNS 31254	M6
Seamless Ferritic Alloy Steel Pipe	ASTM A335 P11	C11
	ASTM A335 P22	C22
Seamless Nickel-Copper alloy Pipe	ASTM B165 UNS N04400	M
Seamless Nickel Alloy Pipe	ASTM B729 UNS N08020	L20
Seamless Carbon Steel Pipe	API 5L GR. B	A5LB

4. Inlet Port

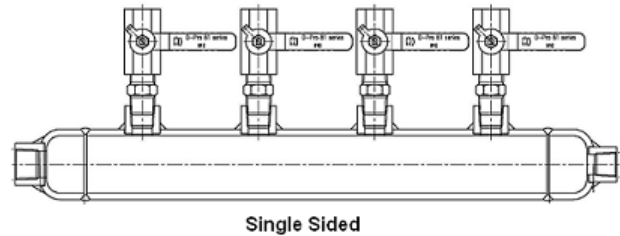
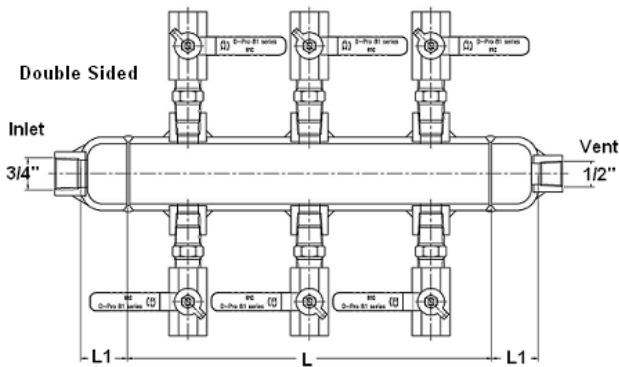
Table A: Type and Size of Inlet Port

S.No.	Size		1/4"	3/8"	1/2"	3/4"	1"
	Size Designator		4	6	8	12	16
1	DK-LOK Tube Fitting OD Designator		D4T	D6T	D8T	D12T	D16T
2	Male Tapered Pipe Thread Designator	NPT	M4N	M6N	M8N	M12N	M16N
		ISO 7-1	M4R	M6R	M8R	M12R	M16R
3	Female Tapered Pipe Thread Designator	NPT	F4N	F6N	F8N	F12N (1)	F16N
		BSPT	F4R	F6R	F8R	F12R	F16R
4	Needle valve Designator	N	Select out of above 1 thru. 3. i.e., ND4T-				
5	Ball valve Designator	B	Select out of above 1 thru. 3. i.e., BM8N				

(1) No designator is required in case F12N is inlet port.

5. Outlet Port Configuration

Outlet Port Configuration	Designator
Double sided	D
Single sided	S



6. Number of Outlet Ports

Select 2 to 20.

7. Outlet port type and size

Select from Table A.

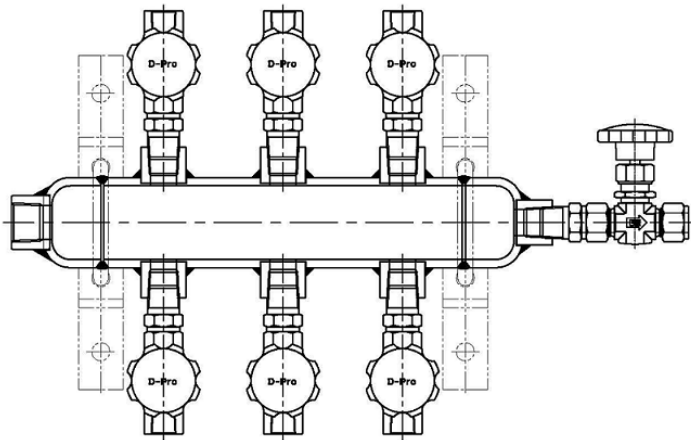
8. Vent Port

No designator is required in case F8N is vent port. For others, select from Table A.

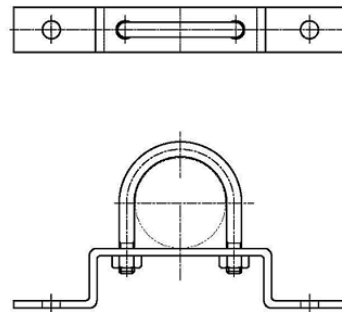
Ordering information Example: J28S-D8NF8N-BD8TB

To order J series, prefix "J"	J	
1. Manifold Pipe Size: 2"	2	
2. Pipe Schedule: SCH80	8	
3. Pipe Material: ASTM A312 TP316	S	
	-	
4. Inlet Port: 3/4" FNPT	Nil	
5. Outlet Port Configuration : Double Sided	D	
6. Number of Outlet Ports: 8 numbers	8	
7. Type and Size of Outlet Ports: Needle Valve 1/2" Female NPT	NF8N	
	-	
8. Vent Port: Ball Valve 1/2" DK-LOK Tube Fitting	BD8T	
9. Material: Select an applicable material designator of fittings and/or valves on 4. Inlet Port, 5. Outlet Ports and 8. Vent Port.	B	
Designator		Material
S		SS316
L		SS316L
C		Carbon Steel
B	Brass	

J Series Mounting Bracket



Mounting Bracket: JMTB



Ordering Number of JMTB Series Mounting Bracket

Pipe Size	Basic Ordering #	Bracket Material
1	JMTB-1-	
2	JMTB-2-	S: Stainless Steel
3	JMTB-3-	C: Carbon Steel
4	JMTB-4-	

- 2 sets of mounting brackets are supplied for one unit of J Series manifold.

Two (2) sets of Mounting Bracket consists of ;

- U-Bolt x 2
- Nut x 4
- Washer x 4
- Bracket x 2

