



**METAL PIPE CLAMPS**



# PI.EFFE.CI.

## Over 40 years of experience

---

PI.EFFE.CI. offers its clients over 40 years experience in the market of TUBE FITTING CLAMPS to fix the pipes, used in many industries.

A productive capacity characterized by high technological standards, a wide range of products with excellent value for money and customer service, high professionalism, these are the strengths of PI.EFFE.CI.

### **ENGINEERING**

The continuous technological innovation, aimed to increase efficiency of production and expanding the range of applications, is provided by highly qualified personnel.

Research and experimentation are essential prerequisites for being able to optimally satisfy the increasingly demanding requirements of a market in continuous innovation.

### **PRODUCTION**

The high efficiency of plants, combined with the optimization and automation of production processes, allows PI.EFFE.CI. to ensure good quality standards for both large and small numbers.

### **RANGE**

The focus always on the market and its trends, allows PI.EFFE.CI. to understand the specific needs of different sectors: industrial, mobile and marine industries and oil, from offshore to industrial piping, mining industry to the petrochemical sector pipelines and pneumatics.

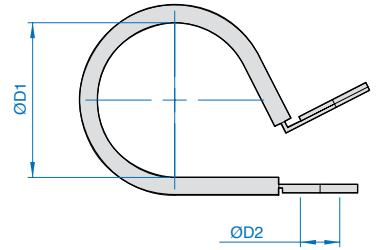
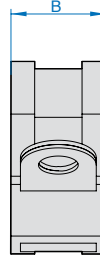
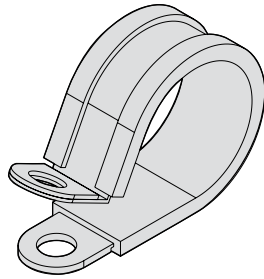
### **SERVICE**

The long experience enables PI.EFFE.CI. to satisfy its customers by using computer supports pre-and post-sale, using the web tool and interactive CDs for technical communication timely and constantly updated.

# FASTENING CLAMP

## Dimensions and order codes

DIN 3016



### Dimensions

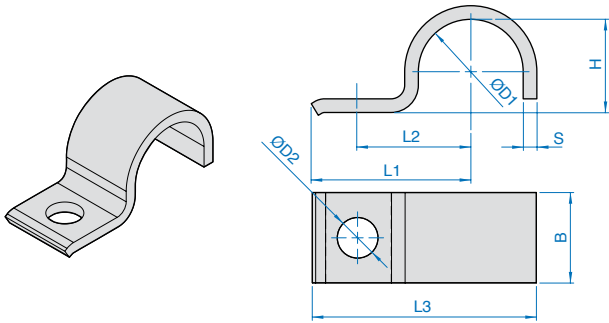
Code PI.EFFE.CI.	Diameter pipe ØD1 (mm)	Width B (mm)	Hole standard ØD2 (mm)	Code PI.EFFE.CI.	Diameter pipe ØD1 (mm)	Width B (mm)	Hole standard ØD2 (mm)	Code PI.EFFE.CI.	Diameter pipe ØD1 (mm)	Width B (mm)	Hole standard ØD2 (mm)	Code PI.EFFE.CI.	Diameter pipe ØD1 (mm)	Width B (mm)	Hole standard ØD2 (mm)
PG5-09	5	9	4,3	PG4-12	4	12	5,3	PG5-15	5	15	6,4	PG10-20	10	20	8,4
PG6-09	6			PG5-12	5			PG6-15	6			PG11-20	11		
PG7-09	7			PG6-12	6			PG7-15	7			PG12-20	12		
PG8-09	8			PG7-12	7			PG8-15	8			PG13-20	13		
PG9-09	9			PG8-12	8			PG9-15	9			PG14-20	14		
PG10-09	10			PG9-12	9			PG10-15	10			PG15-20	15		
PG11-09	11			PG10-12	10			PG11-15	11			PG16-20	16		
PG12-09	12			PG11-12	11			PG12-15	12			PG17-20	17		
PG13-09	13			PG12-12	12			PG13-15	13			PG18-20	18		
PG14-09	14			PG13-12	13			PG14-15	14			PG19-20	19		
PG15-09	15			PG14-12	14			PG15-15	15			PG20-20	20		
PG16-09	16			PG15-12	15			PG16-15	16			PG21-20	21		
PG17-09	17			PG16-12	16			PG17-15	17			PG22-20	22		
PG18-09	18			PG17-12	17			PG18-15	18			PG23-20	23		
PG19-09	19			PG18-12	18			PG19-15	19			PG24-20	24		
PG20-09	20			PG19-12	19			PG20-15	20			PG25-20	25		
PG21-09	21			PG20-12	20			PG21-15	21			PG26-20	26		
PG22-09	22			PG21-12	21			PG22-15	22			PG27-20	27		
PG23-09	23			PG22-12	22			PG23-15	23			PG28-20	28		
PG24-09	24			PG23-12	23			PG24-15	24			PG29-20	29		
PG25-09	25			PG24-12	24			PG25-15	25			PG30-20	30		
PG26-09	26			PG25-12	25			PG26-15	26			PG31-20	31		
PG27-09	27			PG26-12	26			PG27-15	27			PG32-20	32		
PG28-09	28			PG27-12	27			PG28-15	28			PG33-20	33		
PG29-09	29			PG28-12	28			PG29-15	29			PG34-20	34		
PG30-09	30			PG29-12	29			PG30-15	30			PG35-20	35		
PG31-09	31			PG30-12	30			PG31-15	31			PG36-20	36		
PG32-09	32			PG31-12	31			PG32-15	32			PG37-20	37		
PG33-09	33			PG32-12	32			PG33-15	33			PG38-20	38		
PG34-09	34			PG33-12	33			PG34-15	34			PG39-20	39		
PG35-09	35			PG34-12	34			PG35-15	35			PG40-20	40		
PG36-09	36	PG35-12	35	PG36-15	36	PG41-20	41								
PG37-09	37	PG36-12	36	PG37-15	37	PG42-20	42								
PG38-09	38	PG37-12	37	PG38-15	38	PG43-20	43								
PG39-09	39	PG38-12	38	PG39-15	39	PG44-20	44								
PG40-09	40	PG39-12	39	PG40-15	40	PG45-20	45								
PG41-09	41	PG40-12	40	PG41-15	41	PG46-20	46								
PG42-09	42	PG41-12	41	PG42-15	42	PG47-20	47								
PG43-09	43	PG42-12	42	PG43-15	43	PG48-20	48								
PG44-09	44	PG43-12	43	PG44-15	44	PG49-20	49								
PG45-09	45	PG44-12	44	PG45-15	45	PG50-20	50								
PG46-09	46														
PG47-09	47														
PG48-09	48														
PG49-09	49														
PG50-09	50														

**NOTES** Also available higher diameters up to Ø 130 mm.  
Fastening clamp band width 25 mm available in Ø 150 mm.

ORDER EXAMPLES	MATERIALS AND SURFACE
PG10-12-W1 Fastening clamp diameter 10mm band width 12mm Galvanized hexavalent chromium-free St360.	W1: Galvanized hexavalent chromium-free St360. W4: Austenitic Stainless steel Aisi 304.
PG30-20-W4 Fastening clamp diameter 30mm band width 20mm in Stainless steel Aisi 304.	



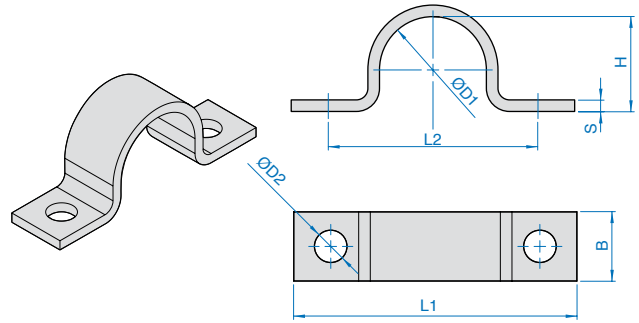
**DIN 1592**



**Dimensions (mm)**

Code P.I.EFFE.CI. ØD1	Diameter Range	ØD2	L1	L2	L3	H	B	S
7	5,5...7	6,6	22	14	27,5	5	16	2
9	7...9		27	18	33,5	6	20	2
13	9,5...13	11	40	25	49,5	9	25	3
15,5	13...15,5		41	26	52	12		
19	15,5...19		43	28	55,5	15		
23	20...23	14	51	35	67	19	30	5
26	23...26		52	36	70	22		
28,5	26...28,5		53	37	73	24		
31	28,5...31		55	39	75,5	27		
36	33...36		57	41	81	32		
39	36...39	18	59	43	83	34	40	8
43	39...43		68	48	94,5	38		
46	43...46		70	50	98	41		
49	46...49		73	53	105,5	44		
52	49...52		76	56	110	47		
58	53...58		76	58	115	52		
61	58...61	80	60	118,5	57			

**DIN 1593**



**Dimensions (mm)**

Code P.I.EFFE.CI. ØD1	Diameter Range	ØD2	L1	L2	H	B	S
7	5,5...7	6,6	44	28	5	16	2
9	7...9		48	32	6	20	2
13	9,5...13		52	36	9		
15,5	13...15,5		56	40	12		
19	15,5...19	11	60	44	15	25	3
23	20...23		82	56	19		
26	23...26		84	58	22		
28,5	26...28,5		90	64	24		
31	28,5...31		90	64	27		
36	33...36	14	106	80	32	30	5
39	36...39		110	84	34		
43	39...43		120	88	38		
46	43...46		122	90	41		
49	46...49		122	90	44		
58	53...58		142	110	52		
61	58...61	18	142	110	57	40	8
71	67...71		152	120	66		
77	73...77		176	136	72		
81	77...81		184	144	76		
91	86...91		198	158	85		
103	99...103		214	174	98		
109	105...109		220	180	104		
115	110...115		226	186	109		
133	130...133		262	214	125		
140	133...140		270	222	132		
159	152...159	288	240	151			
169	162...169	298	250	161			
194	190...194	326	278	189			
220	216...220	356	308	215			

**ORDER EXAMPLES**

**DIN 1592-36-G** Heavy saddle DIN 1592 diameter 36 in Carbon Steel 360.  
**DIN 1592-43-A4** Heavy saddle DIN 1592 diameter 43 in Stainless Steel 316L.  
**DIN 1593-36-Z** Heavy saddle DIN 1593 diameter 36 white zinc-plating.  
**DIN 1593-43-A2** Heavy saddle DIN 1593 diameter 43 in Stainless Steel 304.

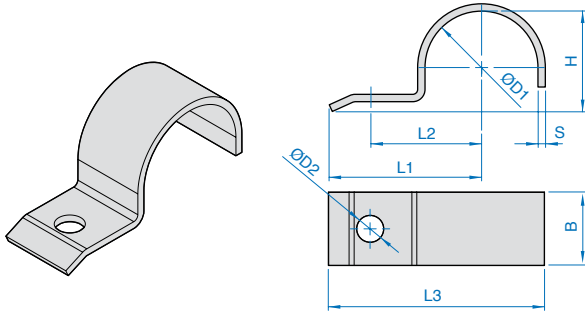
**MATERIALS AND SURFACE**

**G:** Carbon Steel 360  
**Z:** Galvanized hexavalent chromium-free St360  
**A2:** Stainless steel 304  
**A4:** Stainless steel 316L

# LIGHT SADDLES

## Dimensions and order codes

### DIN 1596



#### Dimensions (mm)

Code PI.EFFE.CI. ØD1	Diameter Range	ØD2	L1	L2	L3	H	B	S
7	5,5...7	6,6	26	14	31,5	5	16	2
9	7...9		28	16	34,5	6		
13	9,5...13		30	18	38,5	9		
15,5	13...15,5		32	20	41,75	12		
19	15,5...19		34	22	45,5	15		
23	20...23	9	43	28	57,5	19	25	3
26	23...26		44	29	60	22		
28,5	26...28,5		47	32	64,25	24		
31	28,5...31		47	32	65,5	27		
33	31...33		56	36	75,5	29		
36	33...36	11	57	40	78	32	30	4
39	36...39		59	42	81,5	34		
43	39...43		61	44	85,5	38		
46	43...46		62	45	88	41		
49	46...49		14	67	48	95,5	44	
52	49...52	72		53	102	47		
58	53...58	74		55	107	52		
61	58...61	77		58	111,5	56		

#### ORDER EXAMPLES

**DIN 1596-36-G** Light saddle DIN 1596 diameter 36 in Carbon steel Fe360.

**DIN 1596-43-A4** Light saddle DIN 1596 diameter 43 in Stainless steel 316L.

#### MATERIALS AND SURFACE

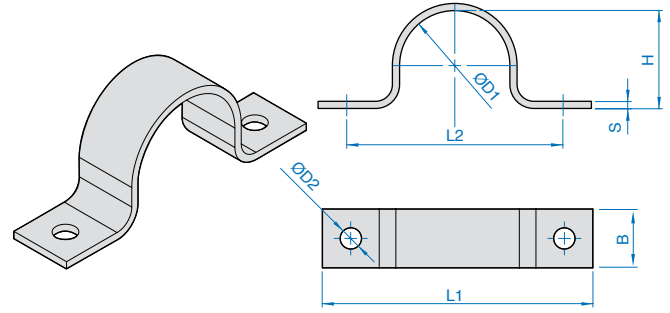
**G:** Carbon Steel 360

**Z:** Galvanized hexavalent chromium-free St360

**A2:** Stainless steel 304

**A4:** Stainless steel 316L

### DIN 1597



#### Dimensions (mm)

Code PI.EFFE.CI. ØD1	Diameter Range	ØD2	L1	L2	H	B	S
7	5,5...7	5,5	44	28	5	16	1,5
9	7...9		48	32	6		
13	9,5...13		52	36	9		
15,5	13...15,5		56	40	12		
19	15,5...19		60	44	15		
23	20...23	6,6	76	56	19	20	2
26	23...26		78	58	22		
28,5	26...28,5		84	64	24		
31	28,5...31		84	64	27		
33	31...33		92	72	29		
36	33...36	9	104	80	32	25	3
39	36...39		108	84	34		
43	39...43		112	88	38		
46	43...46		114	90	41		
49	46...49		11	118	90		
52	49...52	134		106	47		
58	53...58	138		110	52		
61	58...61	138		110	56		

#### ORDER EXAMPLES

**DIN 1597-36-Z** Light saddle DIN 1597 diameter 36 white zinc-plating.

**DIN 1597-43-A2** Light saddle DIN 1597 diameter 43 in Stainless steel 304.

#### MATERIALS AND SURFACE

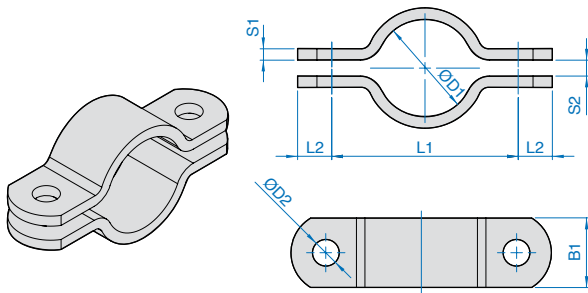
**G:** Carbon Steel 360

**Z:** Galvanized hexavalent chromium-free St360

**A2:** Stainless steel 304

**A4:** Stainless steel 316L

**DIN 3567 - type A**



**Dimensions**

**Accessories**

Code PI.EFFE.CI. ØD1 (mm)	Nominal size		L1	L2	S1	S2	ØD2	B1	Hexagon head bolts Hexagon head nuts												
	mm	Pipe (in)																			
20	15	1/2"	57	15	5	7	11,5	30	M10x30 (M10)												
22			59																		
25	20	3/4"	62																		
27			66																		
30	25	1"	68																		
34			72																		
38	32	1.1/4"	76																		
43			82																		
45	40	1.1/2"	84																		
49			88																		
57	50	2"	104							18	6	9	14	40	M12x35 (M12)						
61			108																		
77	65	2.1/2"	122																		
89	80	3"	136																		
108	100	4"	172													24	8	11	18	50	M16x45 (M16)
115			178																		
133	125	5"	196																		
140			204																		
159	150	6"	222																		
169			232																		
194	175	7"	258																		
216			280																		
220	200	8"	284																		
267			250	10"	342																
273	348																				
318	300	12"	392	30	8	14	23	60	M20x50 (M20)												
324			398																		
356	350	14"	432																		
368			444																		
407	400	16"	498																		
419			510																		
458	450	18"	550																		
508			600																		
521	500	20"	614							36	10	18	27	70	M24x60 (M24)						
610			614																		
610	600	24"	717																		
712	700	28"	812																		
813	800	32"	913																		
915	900	36"	1016																		
1016	1000	40"	1119																		

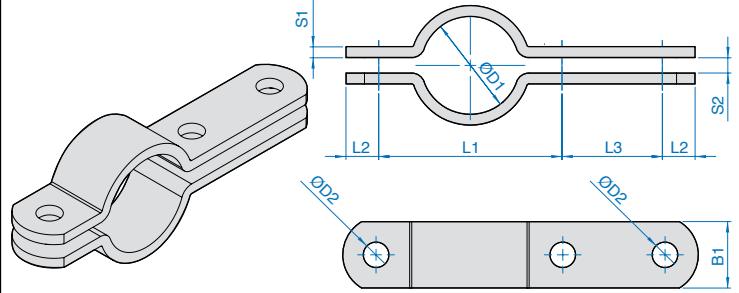
**ORDER EXAMPLES**

**DIN 3567-A-61-FeG** Metal pipe clamp DIN 3567-A diameter 2" in Carbon St360.  
**DIN 3567-A-49-A4** Metal pipe clamp DIN3567-A diameter 1.1/2" in Stainless St.316L.  
**Screws and nuts are not included in delivery.**

**MATERIALS AND SURFACE**

**G:** Carbon Steel 360  
**Z:** Galvanized hexavalent chromium-free St360  
**A2:** Stainless steel 304  
**A4:** Stainless steel 316L

**DIN 3567 - type B**



**Dimensions**

**Accessories**

Code PI.EFFE.CI. ØD1 (mm)	Nominal size		L1	L2	L3	S1	S2	ØD2	B1	Hexagon head bolts Hexagon head nuts														
	mm	Pipe (in)																						
20	15	1/2"	57	15	46	5	7	11,5	30	M10x30 (M10)														
22			59																					
25	20	3/4"	62																					
27			66																					
30	25	1"	68																					
34			72																					
38	32	1.1/4"	76																					
43			82																					
45	40	1.1/2"	84																					
49			88																					
57	50	2"	104								18	54	6	9	14	40	M12x35 (M12)							
61			108																					
77	65	2.1/2"	122																					
89	80	3"	136																					
108	100	4"	172															24	70	8	11	18	50	M16x45 (M16)
115			178																					
133	125	5"	196																					
140			204																					
159	150	6"	222																					
169			232																					
194	175	7"	258																					
216			280																					
220	200	8"	284																					
267			250	10"	342																			
273	348																							
318	300	12"	392	30	86	8	14	23	60	M20x50 (M20)														
324			398																					
356	350	14"	432																					
368			444																					
407	400	16"	498																					
419			510																					
458	450	18"	550																					
508			600																					
521	500	20"	614								36	104	10	18	27	70	M24x60 (M24)							
610			614																					
610	600	24"	717																					
712	700	28"	812																					
813	800	32"	913																					
915	900	36"	1016																					
1016	1000	40"	1119																					

**ORDER EXAMPLES**

**DIN 3567-B-34-A2** Metal pipe clamp DIN 3567-B diameter 1" Stainless St.304.  
**DIN 3567-B-77-Z** Metal pipe clamp DIN 3567-B diameter 2.1/2" White zinc-plating.  
**Screws and nuts are not included in delivery.**

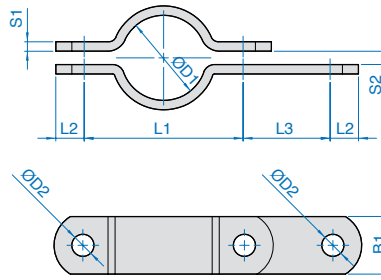
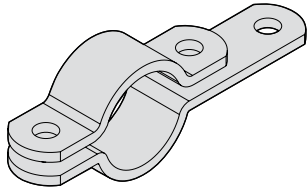
**MATERIALS AND SURFACE**

**G:** Carbon Steel 360  
**Z:** Galvanized hexavalent chromium-free St360  
**A2:** Stainless steel 304  
**A4:** Stainless steel 316L

# METAL PIPE CLAMPS

## Dimensions and order codes

### DIN 3567 - type A/B



#### Dimensions

#### Accessories

Code PI.EFFE.CI. ØD1 (mm)	Nominal size		L1	L2	L3	S1	S2	ØD2	B1	Hexagon head bolts Hexagon head nuts							
	mm	Pipe (in)															
20	15	1/2"	57	15	46	5	7	11,5	30	M10x30 (M10)							
22			59														
25	20	3/4"	62														
27			66														
30	25	1"	68														
34			72														
38	32	1.1/4"	76														
43			82														
45	40	1.1/2"	84														
49			88														
57	50	2"	104								18	54	6	9	14	40	M12x35 (M12)
61			108														
77	65	2.1/2"	122														
89	80	3"	136														
108	100	4"	172														
115			178														
133	125	5"	196	24	70	8	11	18	50	M16x45 (M16)							
140			204														
159	150	6"	222														
169			232														
194	175	7"	258														
216			280														
220	200	8"	284														
267			342														
273	250	10"	348								30	86	8	14	23	60	M20x50 (M20)
318			392														
324	398																
356	350	14"	432														
368			444														
407	400	16"	498	36	104	10	18	27	70	M24x60 (M24)							
419			510														
458	450	18"	550														
508	500	20"	600														
521			614														
610	600	24"	717														
712	700	28"	812														
813	800	32"	913														
915	900	36"	1016														
1016	1000	40"	1119														

#### ORDER EXAMPLES

**DIN 3567-A/B -49-G** Metal pipe clamp DIN 3567 A/B diameter 1.1/2" in Carbon Steel untreated.

**DIN 3567-A/B -61-Z** Metal pipe clamp DIN 3567 A/B diameter 2" White zinc-plating.

**Screws and nuts are not included in delivery.**

#### MATERIALS AND SURFACE

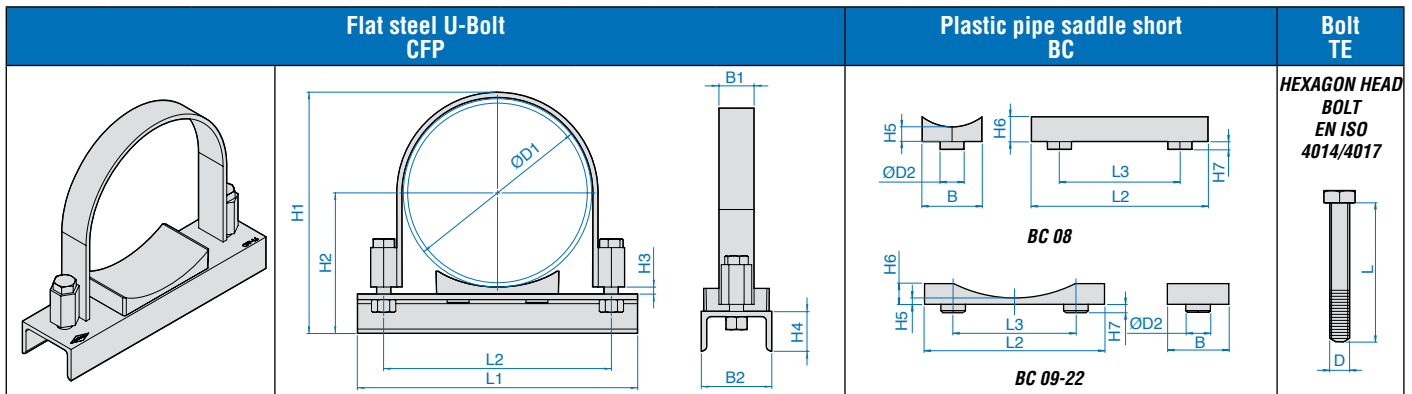
**G:** Carbon Steel 360

**Z:** Galvanized hexavalent chromium-free St360

**A2:** Stainless steel 304

**A4:** Stainless steel 316L





For material characteristics see notes. **Steel 360** Plastic pipe saddle short BC Material PP-PA **TE Steel 8.8**

Code PI.EFFE.CI.	O.D. of pipe ØD1		U-Bolts with 2 screws and 2 nuts.							For size BC08 dimension L3 is staggered by 90°.							DxL
	in mm	in inch	L1	L2	H1	H2	H3	B1	Steel "U" profile (DIN 1026) B2xH4	L2	L3	B	H5	H6	H7	ØD2	
CFP 08	48,3	1.1/2"	100	76	95	67	5	20x3	50x38	35	25	24	5	8	5	8	M10x40
CFP 09	60,3	2"	115	88	106	73,2	5	20x3	50x38	38	25	50	5	10	6	10	M10x40
CFP 10	76,1	2.1/2"	132	104	122	81	5	20x3	50x38								M10x40
CFP 11	88,9	3"	160	122	146	97,5	8	40x4	80x45	7	40 (40,5 PA)	70	8	17	10	15	M12x55
CFP 12	102	3.i/2"	170	134	159	104	8	40x4	80x45								M12x55
CFP 13	114,3	4"	180	147	171	110	8	40x4	80x45								M12x55
CFP 14	139,7	5"	210	172	197	123	8	40x4	80x45								M12x55
CFP 15	168,3	6"	275	211	230	137	8	40x6	80x45	140	90 (91 PA)	75	8	26	10	25	M16x75
CFP 16	219,1	8"	320	261	280	162,5	8	40x6	80x45								M16x75
CFP 17	273	10"	385	330	334	189,5	8	40x8	80x45								M20x80
CFP 18	323,9	12"	450	382	390	215	8	40x8	80x45	220	150 (152 PA)	75	8	32	10	30	M20x80
CFP 19	355,6	14"	480	420	421	235	12	60x8	100x50								M24x100
CFP 20	406,4	16"	550	470	472	261	12	60x8	100x50								M24x100
CFP 21	457	18"	585	520	523	286,5	12	60x8	100x50								M24x100
CFP 22	508	20"	630	570	574	312	12	60x8	100x50								M24x100

**ORDER EXAMPLES**

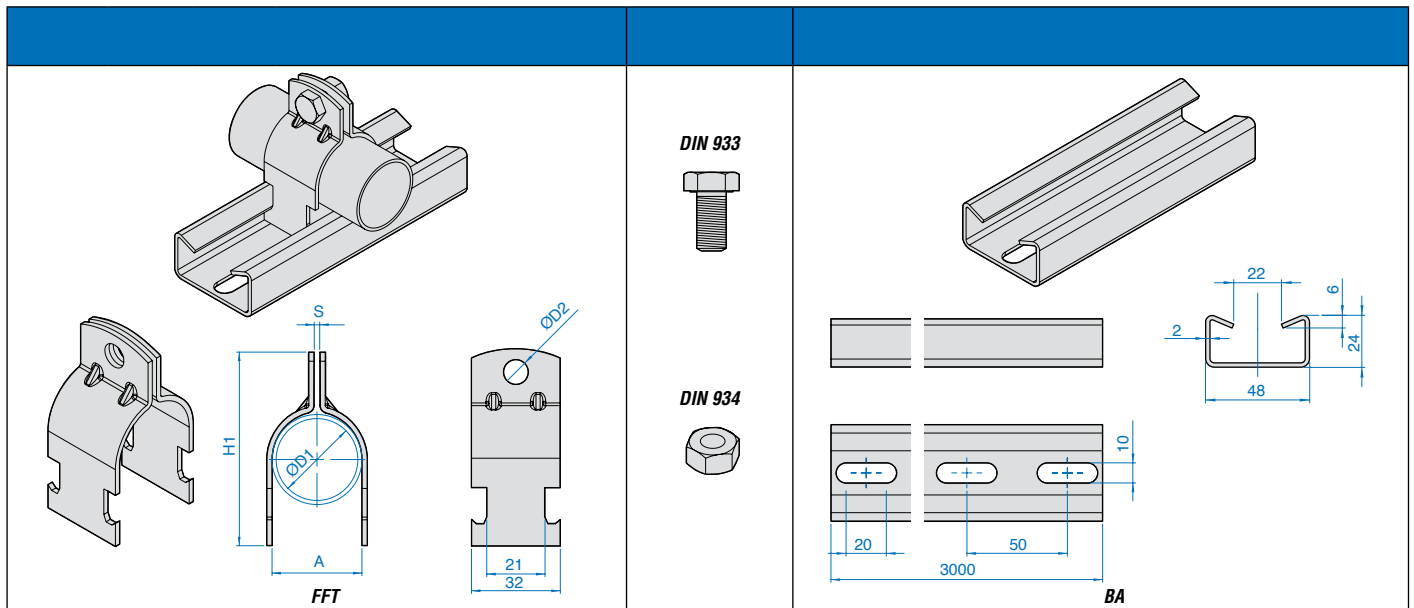
**CFP08-PP** Flat steel U-bolt CFP08 for pipe outside diameter 48.3 mm with plastic saddle short in polypropylene and screws TE M12x55.  
**CFP12-PA** Flat steel U-bolt CFP12 for pipe outside diameter 102 mm with plastic saddle short in polyamide and screws TE M10x40.

**NOTES**

**Materials:**  
 Flat steel U-bolt: **Galvanized hexavalent chromium-free St360.**  
 Plastic pipe saddle: **Polypropylene and Polyamide.**  
 Screws and nuts: **Steel 8.8.**

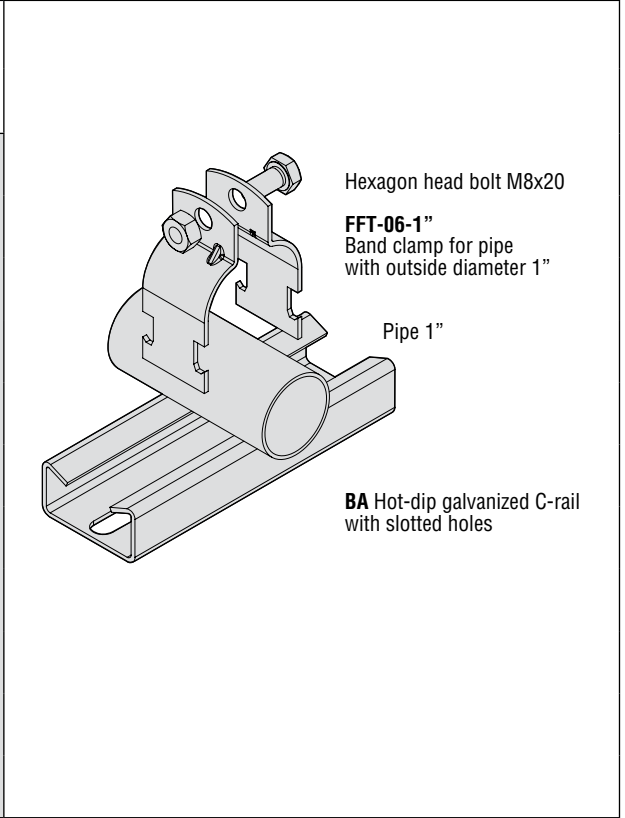
# BAND CLAMPS FOR PIPES WITH C-RAIL

Dimensions and order codes



**Dimensions (mm)**      **Accessories**      **Mounting example band clamp FFT-06 for pipe with outside diameter 1" with C-rail BA and hexagon head bolt M8x20.**

Code PI.EFFE.CI.	Nominal size			S	ØD1	Hexagon head bolt Hexagon head nut
	A	ØD1	H1			
FFT-04	22	1/2"	57	2 Aisi304 1.8	9	M8x20 (M8)
FFT-05	28	3/4"	63			
FFT-06	35	1"	70			
FFT-07	44	1.1/4"	78			
FFT-08	50	1.1/2"	84			
FFT-09	62	2"	96			
FFT-10	78	2.1/2"	112			
FFT-11	90	3"	125			
FFT-12	103	3.1/2"	137			
FFT-13	116	4"	150			
FFT-14	141	5"	176			



## ORDER EXAMPLES

**FFT-06-Z** Band clamp for pipe diameter 1" Galvanized hexavalent chromium-free-St360.

**FFT-09-A2** Band clamp for pipe diameter 2" in Stainless steel Aisi 304.

**BA:** Hot-Dip galvanized C-Rail.

**NB: Accessories for assembling included, C-Rail sold separately.**

## MATERIALS AND SURFACE

**BAND CLAMPSZ:** Galvanized hexavalent chromium-free St360.

**A2:** Stainless steel Aisi 304.

**C-RAIL**      **Carbon steel 360.**

**ZC:** Hot-Dip galvanizing ISO 1461 Fe/Zn C.

The values contained in this catalogue have been collected most carefully,  
but must be considered indicative only and not absolute.

The company refuse all responsibility pertaining to the products  
with the exception of manufacturing defect.

We reserve the right to make supplements  
or modifications without previous notice.

**FA01**  
Available April 2013

***a worldwide  
presence***



**PI.EFFE.CI. SRL**

**main office and production**  
via G. Sidoli 11/a - 43123 Parma - Italy

**production**  
via G. Marconi 76/a - 43123 Parma - Italy

**tel +39 0521 242676 - fax +39 0521 242861**  
**info@pieffeci.com - www.pieffeci.com**