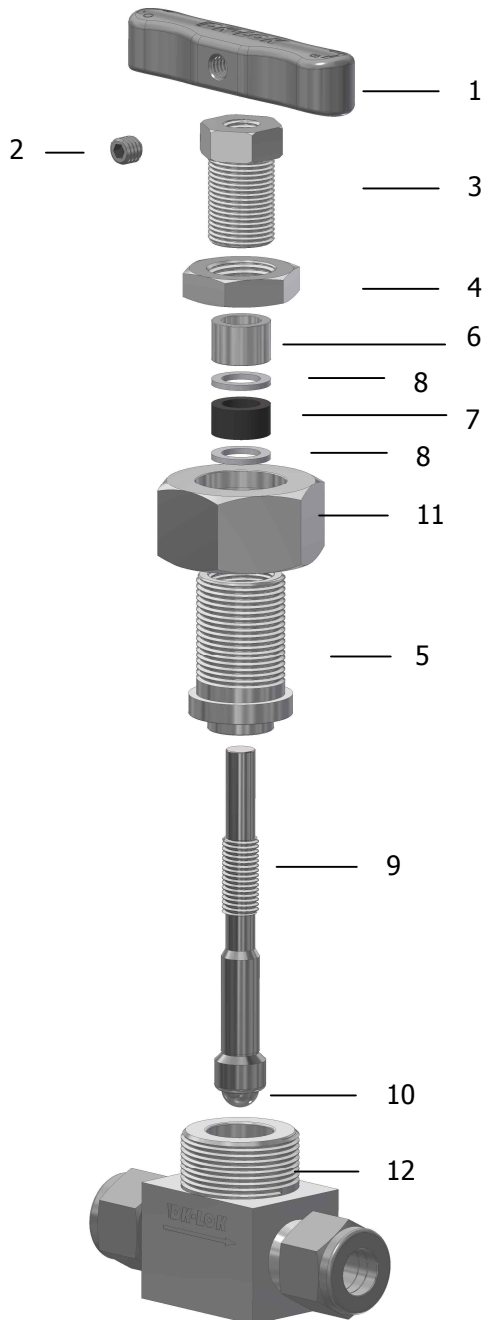


## Features

- Temperature Rating up to 1,200°F (648°C) with Grafoil packing.
- Designed for use in a fully open or fully closed position.
- Orifice size of 0.25 In(6.4 mm).
- Non-rotating stem disc design.



## Materials of Construction

No.	Component	Material
1	Bar Handle	Stainless Steel
2	Set Screw	Stainless Steel
3	Packing Bolt	ASTM A276 TYPE316
4	Jam Nut	ASTM A276 TYPE316
*5	Bonnet	ASTM A276 TYPE316
6	Gland	ASTM A276 TYPE316
*7	Packing	Grafoil
*8	Packing Support	ASTM A276 TYPE316
*9	Stem	ASTM A276 TYPE316
*10	Stem Disc	Stellite
11	Union Nut	ASTM A276 TYPE316
*12	Body	ASTM A276 TYPE316

*\* Wetted parts and lubricants listed in blue.*

## Pressures-Temperature Ratings

ASME Class	2500
Material Group	2.2
Material Name	SS316
Temperature, °F (°C)	Working pressure, psig (bar)
-65(-53) to 100 (38)	6000 (413)
200 (93)	5160 (355)
300 (148)	4660 (321)
400 (204)	4280 (294)
500 (260)	3980 (274)
600 (315)	3760 (259)
700 (371)	3600 (248)
800 (426)	3460 (238)
900 (482)	3280 (225)
1000 (537)	3030 (208)
1100 (593)	2685 (184)
1200 (648)	1715 (118)

## Factory Test and Cleaning

Every valve is tested with the nitrogen gas @ 1,000 psig (68.9 bar) for leakage at the seat to a maximum allowable leak rate of 0.1 SCCM. The packing is tested for no detectable leakage. Optional hydrostatic shell test with additional cost is performed with pure water at 1.5 times the working pressure. Every valve is cleaned and packaged in accordance with DK-Lok cleaning standard DC-01.

