



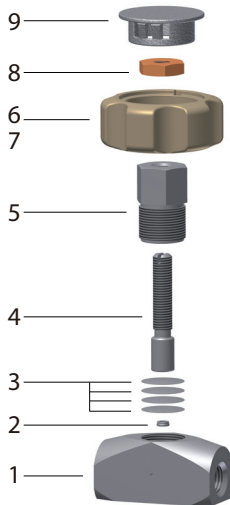
Features

- It is featured that the diaphragm valve serves economical, high performance and high cycle life time.
- The diaphragm valve is used for shut-off, isolation in gas control systems, and analyzer sampling systems.
- The valve ensures positive and consistent shut-off with manual and offers a metal to metal seal to atmosphere for leak integrity with thin plate diaphragm.

Technical Data

Body Material	Seat Material	Temperature Rating °F (°C)	Pressure Rating @ -40 ~ 160 °F (-40 ~ 70°C)	Control Volume
SS316L/A276	PCTFE	-40 ~ 150 (-40 ~ 66)	0 ~ 3,500 psig (241 barg)	1 cc
BRASS/B16	PCTFE	-40 ~ 150 (-40 ~ 66)	0 ~ 3,500 psig (241 barg)	1 cc

Ordering Information



No.	Component	VD3 Series (Standard)
1	BODY	SS316L(A276) / Brass (B16)
2	SEAT	PCTFE
3	DIAPHRAGM	SS316L
4	STEM	SS316L
5	BONNET	SS316L
6	KNOB NUT	SS316L
7	KNOB	ABS
8	LOCK NUT	SS316L
9	KNOB CAP	ABS

Factory Test

Every valve is factory tested with nitrogen gas @1,000 psig (68.9 barg) for leakage to a maximum allowable leak rate of 0.1 SCCM at seat. Hydraulic shell test is optionally performed at 1.5 times the working pressure to a requirement of no detectable leakage with a liquid leak detector.

Cleaning and Packaging

Every valve is cleaned and packaged in accordance with DK-Lok cleaning standard DC-01. Special cleaning and packaging in accordance with DK-Lok DC-11 ensures compliance with product cleaning of ASTM G93 Level C is available on request for valves with PCTFE and PTFE seats.

