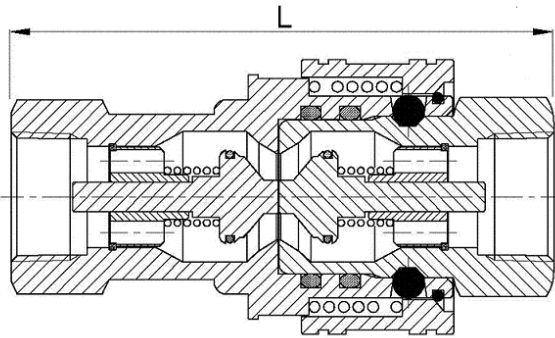




DQH Series High Flow Quick Coupler

DQH-1

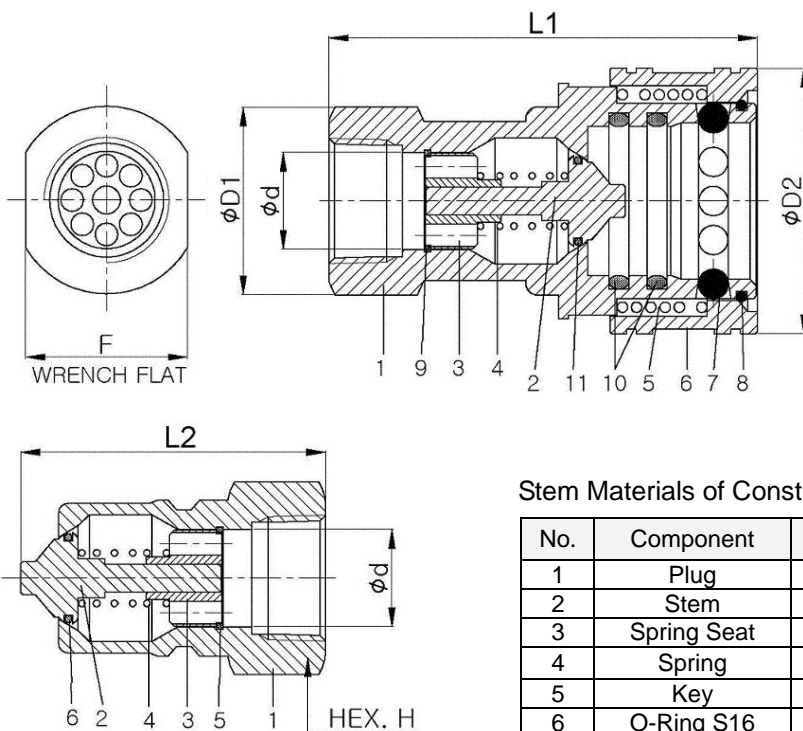


Features

- Standard SS316 and Carbon Steel construction.
- Standard Buna-N seal O-ring.
- Body and Stem Ball-locking for positive connection.
- Standard Double Valve (DV) on body and stem.
- Interchangeable with other manufacturer's coupler.

Design and Interchangeability

DQH Series is designed to meet ISO 7241-1 Series B standard that specifies the dimensions of stem and test requirements. Thus DQH coupler is interchangeable with those of other manufacturers produced as per the same ISO standard.



Body Materials of Construction

No.	Component	Material	Q'ty
1	Socket	SS 316	1
2	Stem	SS 316	1
3	Spring Seat	SS 316	1
4	Spring	SS 304	1
5	Spring	SS 304	1
6	Sleeve	SS 316	1
7	Ball	SS 304	10
8	Key Spring	SS 304	1
9	Spiral Key	SS 304	1
10	O-Ring	Buna-N	2
11	O-Ring S16	Buna-N	1

Stem Materials of Construction

No.	Component	Material	Q'ty
1	Plug	SS 316	1
2	Stem	SS 316	1
3	Spring Seat	SS 316	1
4	Spring	SS 304	1
5	Key	SS 304	1
6	O-Ring S16	Buna-N	1

Ordering Number and Dimensions

Order Number	End Connection	Dimension					Unit: mm			
		L	L1	L2	D1	D2	d	F	H	
Stainless Steel 316										
DQH-F12N-S	3/4" Female NPT	110.6	90	56	39.5	55.8	20.5	34.0	35.0	
DQH-F12R-S	3/4" Female ISO 7-1									
Carbon Steel										
DQH-F12N-C	3/4" Female NPT	110.6	90	56	39.5	55.8	20.5	34.0	35.0	
DQH-F12R-C	3/4" Female ISO 7-1									

Pressure Rating: 280 bar (4000 psi)

Temperature Rating: - 40 to 120 C (-40 to 250 F) with standard Buna-N seal O-ring.

Factory Test, Cleaning and Packaging

Every valve is factory tested for sealing performance and cleaned, packaged in accordance with DK-LOK cleaning standard of DC-01.