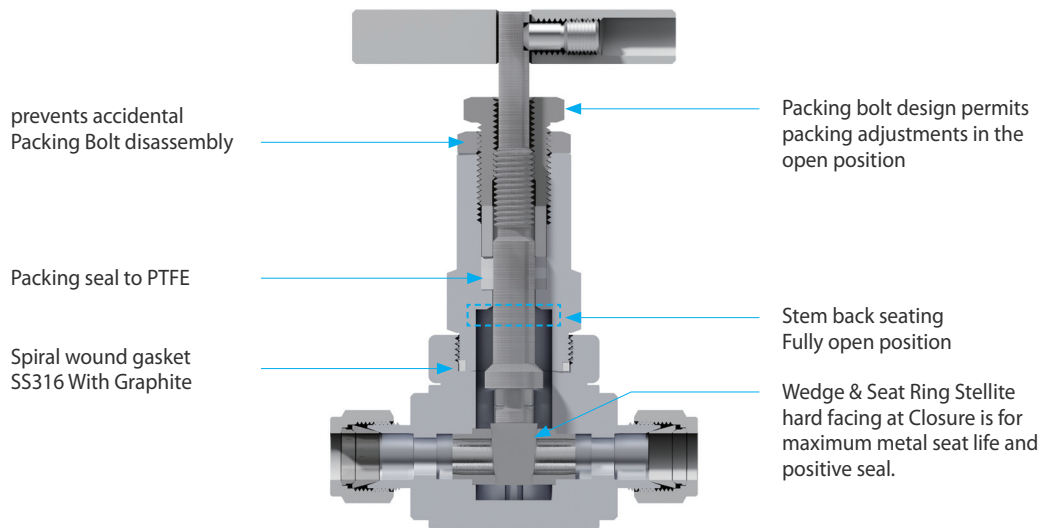




Features

- Pressure up to 3600 psig (248 bar)
- Temperature up to -65°F (-53°C) ~ 449°F (232°C) with Standard PTFE Packing
- End connection : Screwed End 1/4 ~ 1", DK-Lok Tube Fitting 1/8 ~ 1"
- Straight through flow path for providing a minimum pressure drop and maximum flow
- Valve stem back seating against the bevelled edge of bonnet in fully open position prevents maximum leakage through bonnet when packing fails



Design

- DK-LOK Gate valve are design to ASME B16.34 Class 1500 pressure rating
- NPT thread connections in accordance with ASME B1.20.1

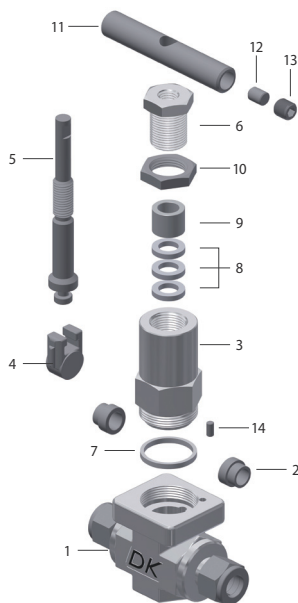
Factory Test

- Every valve is factory tested with nitrogen @ 69 bar (1000 psig) for leakage at the seat to a maximum allowable leak rate of 0.1 SCCM.
- Stem packing is tested for no detectable leakage.

Cleaning and Packaging

- Every valve is cleaned and packaged in accordance with DK-LOK cleaning standard DC-01.

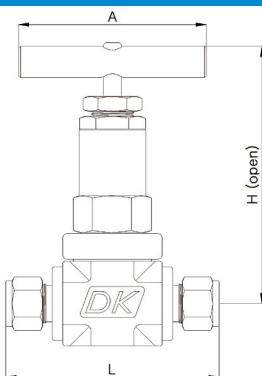
Materials of Construction



Component	Valve Material
1. Body	ASTM A182 F316
2. Seat ring	ASTM A279 TYPE 316 (Hard facing)
3. Bonnet	ASTM A279 TYPE 316
4. Wedge	ASTM A351 CF8M (Hard facing)
5. Stem	ASTM A279 TYPE 316
6. Packing bolt	ASTM A279 TYPE 316
7. Bonnet Packing	PTFE
8. Packing	PTFE
9. Gland	ASTM A279 TYPE 316
10. Lock Nut	ASTM A279 TYPE 316
11. Handle	ASTM A279 TYPE 316
12. Handle pin	Stainless steel
13. Bolt	Stainless steel
14. Pin	Stainless steel

Wetted components are listed in blue.

Dimensions



Basic Ordering Number	End Connection	Orifice	Dimensions, mm(inch)		
			L	H	A
V43	F6N	3/8" Female NPT	100 (3.94)	140 (5.51)	89 (3.5)
	F8N	1/2" Female NPT			
	D8T	1/2" DK-LOK			
	D12T	3/4" DK-LOK			
	SW6P	3/8" Socket Weld	86 (3.39)		
	SW8P	1/2" Socket Weld			

All dimensions shown are for reference only and are subject to change.

Ordering Information

Select valve basic ordering number, applicable Packing, body material, Connection size, Valve Class Rating

V43	- F8N	-E	-G	-S
Connection	Class Rating	Packing Material	Valve Body Material Designator	
Female NPT 3/8" : F6N F8N D8T D12T SW6P SW8P	Nil : Class 1500	Nil : PTFE G : Graphite	S : ASTM A182 F316	

Safe Valve Selection

The selection of a valve for any application or system design must be considered to ensure safe performance. Valve function, valve rating, material compatibility, proper installation, operation and maintenance remain the sole responsibility of the system designer and the user. DK-Lok accepts no liability for any improper selection, installation, operation or maintenance.